

 **smartlog** **EROSKI**

**First Grocery  
AutoStore in Spain**

**EROSKI** **smartlog**



**EROSKI**, a leading company in the food distribution sector in Spain, has implemented an **AutoStore** system at its distribution center in Son Morro, Mallorca, with the aim of optimizing its grocery distribution services and making efficient use of its space. This solution has been a major breakthrough for the company, enabling it to improve order accuracy, reduce delivery times and offer a better customer experience. Discover how **EROSKI** has achieved unprecedented efficiency in the distribution of grocery products at its distribution center in Son Morro, Mallorca.

**EROSKI** is a leading cooperative in the supermarket sector in Spain, committed to the efficient distribution of food products. With an extensive network of supermarkets, **EROSKI** focuses on continuously improving the customer experience through the implementation of advanced technologies.



## The challenges - Optimization and efficiency

---

**EROSKI** was faced with the challenge of improving the efficiency of its supply chain to meet the growing demand of its customers and to make optimal use of its storage space.

Your needs:

- **Optimize grocery distribution:** The company was looking for a solution that would allow it to more efficiently manage the picking and preparation of grocery orders to maintain its competitiveness in the supermarket market.
- **Making better use of space:** **EROSKI** wanted to make the most of the space available at its Son Morro distribution center.
- **Improve order accuracy:** The company sought to reduce errors in order preparation to better serve its customers.
- **Reducing delivery times:** **EROSKI** wanted to shorten delivery times for orders to its supermarkets.



## A comprehensive solution

---

As an integrated logistics engineering company, SmartLog has conducted an in-depth analysis of **EROSKI's** product flow and needs. Our approach focuses on designing automated or robotized solutions, implementing engineering projects and maintaining them properly. This consultative approach is one of our main strengths, allowing us to efficiently connect and integrate systems and components so that processes flow efficiently, quickly and smoothly.

The integration of systems, assets and processes with software that offers interoperability with the customer's ERP and management systems brings multiple benefits. It enables process optimization by continuously improving operational efficiency and reducing costs. It ensures improved visibility by providing real-time information on inventory and operations. In addition, the flexibility and scalability of the system allows it to adapt quickly to changes in demand or the market, significantly improving customer service through faster and more accurate order fulfillment.

After this exhaustive analysis of their current needs and characteristics, a comprehensive solution was designed that includes a state-of-the-art AutoStore

for the preparation of orders of unitary or slow-moving dry products, to which is added Galys, their warehouse management system that integrates, controls and orchestrates all the processes and systems within the preparation center to enable real-time inventory tracking, and in the current management of expiration dates and best-before dates of the items.

AutoStore features:

- **Grid prepared to hold 21,275** 330mm high net bins with **36 robots**, which move at high speed to collect the products of more than **4,000 references in 900m2**. System prepared to carry out more than 30% of the entire production of **EROSKI** Son Morro.
- **7 carousel ports**, 3 of them for picking and 4 for item inputs, although inputs and outputs can be used interchangeably.
- **3 picking stations**, positioned on a 1-meter platform to which lifting tables are added to optimize the ergonomics of the operators and facilitate the placement of items in the shipping cartons.



## Galys: Total logistics optimization and control

Galys is a warehouse management software that integrates seamlessly with existing processes, providing intelligence to all phases of the customer's logistics activity and acting as the command center of the logistics operation.

This software manages all the company's assets, allowing the interconnection of its more traditional operations (WMS) with automated processes (WCS) through a collaborative platform.



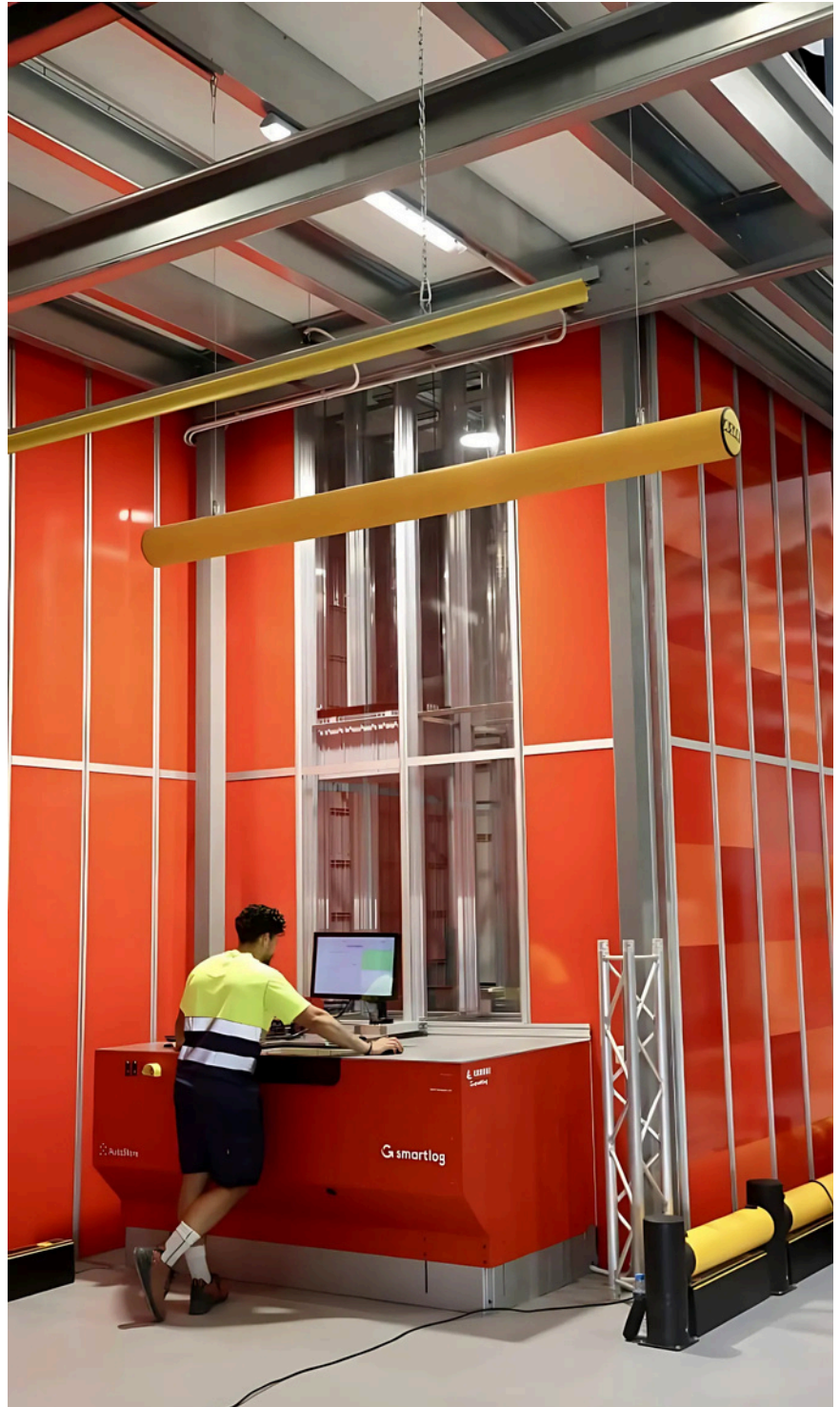
## Efficient and automated operations

**AutoStore** is a robotic storage and retrieval system that uses a three-dimensional network of containers to store and transport products.

Products are stored in the garbage cans. Robots move the necessary containers autonomously, picking and moving them to the picking ports, allowing the products to be picked in an automated manner, at workstations by operators maximizing distribution efficiency, optimizing space and streamlining the picking process.

Once prepared, the orders are shipped to **EROSKI** supermarkets.

Following the implementation of the AutoStore system, **EROSKI's** distribution center operations have undergone a radical transformation. The system enables fast and accurate order preparation, with a highly automated workflow that minimizes errors and maximizes efficiency.





## Benefits

The implementation of the AutoStore system at **EROSKI** Mallorca has brought numerous benefits to the company, among which the following stand out:

- **Increased efficiency in distribution:** AutoStore has enabled **EROSKI** to increase efficiency in order picking, with an increase in productivity of up to 400%.
- **Space optimization and cost savings:** The AutoStore system allows up to four times more stock keeping units (SKUs) to be stored compared to traditional systems. This is crucial for handling large volumes of SKUs in a small space. The adoption of AutoStore has enabled **EROSKI** to reduce its warehouse space requirements, aligning with its goals of sustainable and cost-effective business practices. This efficient use of space not only reduces operating expenses, but also contributes to the company's environmental sustainability. The AutoStore system has enabled **EROSKI** to reduce the space needed to store its products by 25% of the previous space.
- **Increase distribution efficiency** by reducing the time and effort required for order preparation.
- **People satisfaction and performance.** The more efficient and less physically demanding work environment has increased people's satisfaction, resulting in a more positive work environment.



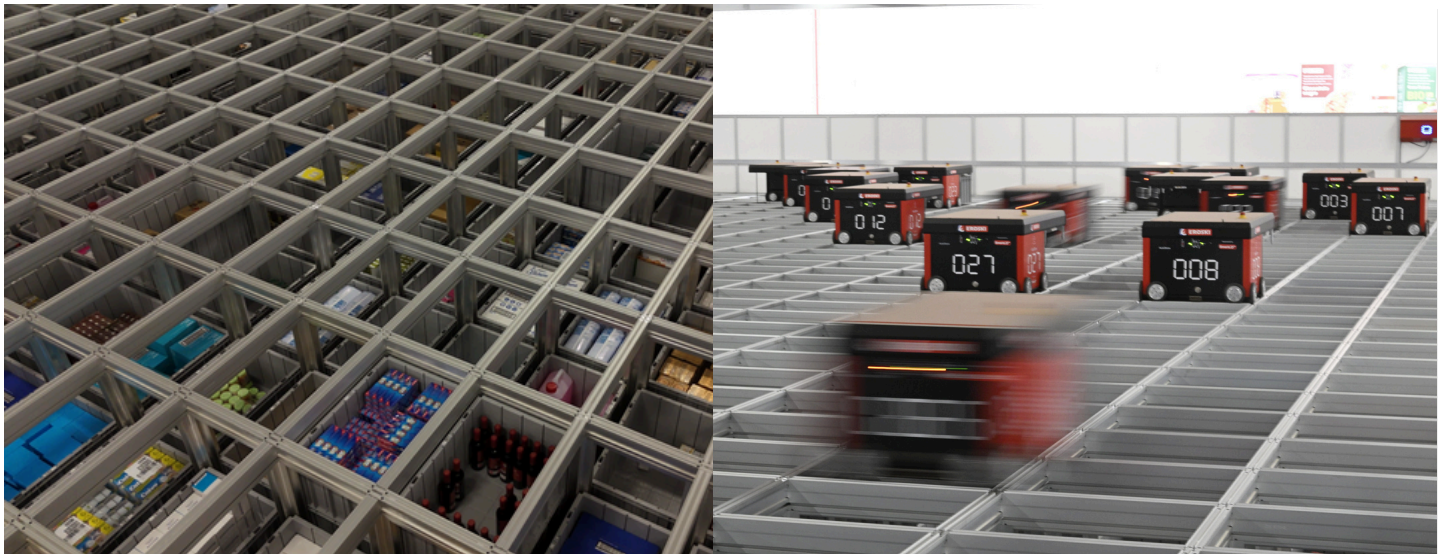
- **Increased customer satisfaction:** The efficiency and reliability of the AutoStore system have significantly improved customer satisfaction, enabling **EROSKI** to meet and exceed its customers' expectations.
- **Real-time tracking.** Galys, Smartlog's WMS, provides real-time inventory tracking, facilitating timely product management and replenishment, resulting in improved product availability for customers.
- **Adaptability and scalability:** AutoStore's modular design adapts to any type of warehouse and allows storage capacity to be expanded without disrupting operations. The flexibility and scalability of Smartlog's AutoStore system also allows **EROSKI** to effectively manage demand peaks without compromising service quality. This capability ensures that **EROSKI** maintains its agility and responsiveness in high-demand conditions.
- **Reliability:** With 99.7% system uptime, AutoStore guarantees constant and uninterrupted access to inventory.





## First in the grocery sector

**EROSKI** becomes a pioneer in the food sector in Spain by implementing the first AutoStore in the food sector, highlighting its commitment to innovation and operational efficiency.



**EROSKI's** experience with AutoStore demonstrates that the AutoStore system is an ideal solution for companies in the food distribution sector seeking to optimize their operations. These automated solutions can have on the efficiency and competitiveness of food distribution companies. With AutoStore, **EROSKI** has set a new challenge in the food distribution industry, providing a clear reference for other companies looking to optimize their logistics operations.

**Discover the robotic system of the Son Morro logistics center ([youtube.com](https://www.youtube.com))**

Increased  
productivity

**400%**

Improving  
capacity

storage

**25%**

Reliability and availability

**99,7%**

"We are very satisfied with the implementation of **AutoStore** in our Son Morro distribution center. It has been a revolutionary change and has been a breakthrough for **EROSKI**, allowing us to improve efficiency in distribution and accuracy in order picking. With these solutions provided by **Smartlog**, we are reducing lead times and have optimized the use of space, allowing us to handle a greater volume of products without the need to expand our facilities. This investment represents our vision and determination to transform **EROSKI** into a more efficient, modern company focused on the needs of customers and employees."

**Alfredo Herraez**  
**Managing Director of Eroski**  
**Baleares**







**Salvador Perez**  
**Supply Manager**

“The partner that we **trusted the most**, both for their **closeness** in dealing with us and for their interest in advising us and giving us information, was Smartlog from the beginning. That is why we decided to integrate AutoStore with them. From the beginning, they adapted everything to our needs in a **personalized and complete** way. The **benefits** we have obtained are a great **increase in productivity** and a **great improvement in ergonomics**, not only with the operators who work in automation, but also with those who work in the traditional warehouse, who, by having more space, can move around more easily and lift less weight, in a **much less forced way**.”

## Purpose

**Create a new sustainable, resilient logistics focused on people's well-being.**

“Creating a new sustainable, resilient and people-centred logistics” means designing and developing a logistics approach that takes into account not only efficiency and profitability, but also the positive impact on people’s quality of life and their environment. It involves considering aspects such as environmental sustainability, worker safety, customer comfort and corporate social responsibility. In short, it is about prioritising the balance between business objectives and the benefit of society at large.

## Value proposition

At Smartlog we provide **unique** intralogistics solutions and services with the **most innovative** technologies. Our goal is to offer **personalized, local and unlimited** attention and to make processes more sustainable, intelligent and resilient to contribute to business success.



## What we bring

### Smart technology

We provide mobile and autonomous robotics, artificial intelligence and big data technologies.

### Sustainability

Lower energy consumption, lower emissions. Ensuring sustainable growth and improving people's well-being and quality of life.

### Efficiency

Our studies facilitate the reengineering of tasks and locations. We eliminate repetitive tasks.

### Operations integration software

Our warehouse management software (WMS) integrates and manages the entire flow of operations, enables forecasting and connects communication systems with the consumer.

### Leadership and competitiveness

We help optimize processes, increase productivity and reduce total operating costs to strengthen our clients' leadership position.

### We optimize spaces

Lower energy consumption, lower emissions. Ensuring sustainable growth and improving people's well-being and quality of life.

### Flexibility and adaptability

Modular and scalable systems that are quick and easy to install for continuous adaptation to changes, trends, market regulations, new products or customers.

### Future growth

We support companies in their future growth by providing modular and scalable systems. We anticipate changes or trends through our own monitoring and predictive maintenance technology.

## Contact us

### Mikel Aguado

Growth Marketing Manager

t. +34 943 841 899 m. +34 663 392 767

e. [maguado@smartlog-group.com](mailto:maguado@smartlog-group.com)

[www.smartlog-group.com](http://www.smartlog-group.com)